



predictum

STDF Import Add-In

---

minimum requirements:

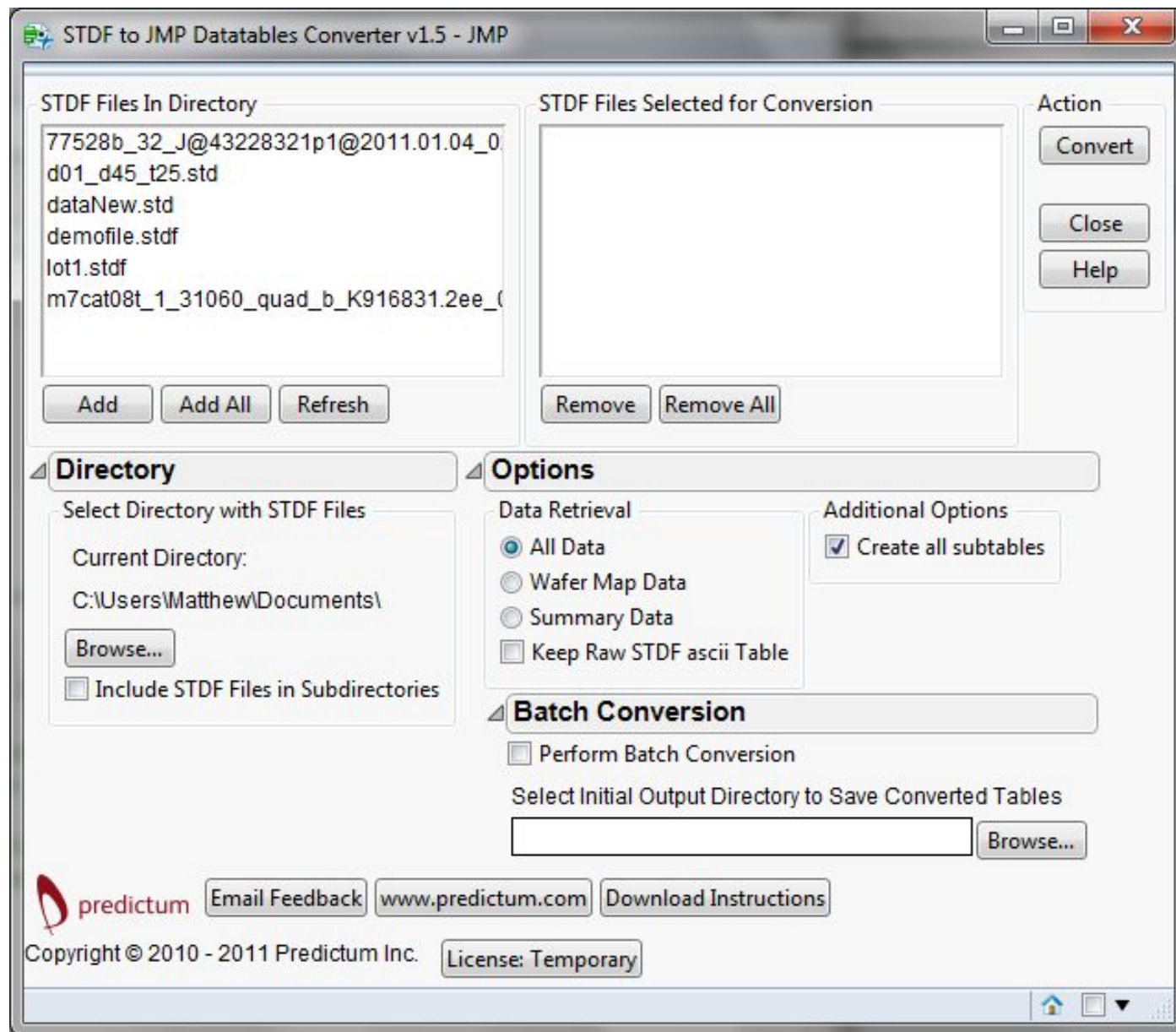
JMP® 8 (script) /JMP® 9 (add-in), Windows 32-bit/64-bit

Copyright © 2011 Predictum Inc.

# STDF IMPORT: JMP® Add-In

## Features

- Reads a binary STDF (Version 4) file and outputs a JMP® datatable with the values converted to ASCII
- Allows multiple STDF files to be converted with just one click
- Batch Conversion option where the output datatables are automatically saved to a specified directory
- Option to create different subtables: Wafer Map and Summary Data, Synopsis and Bin Records
- Multiple formatting and displaying options for Parametric Data test columns

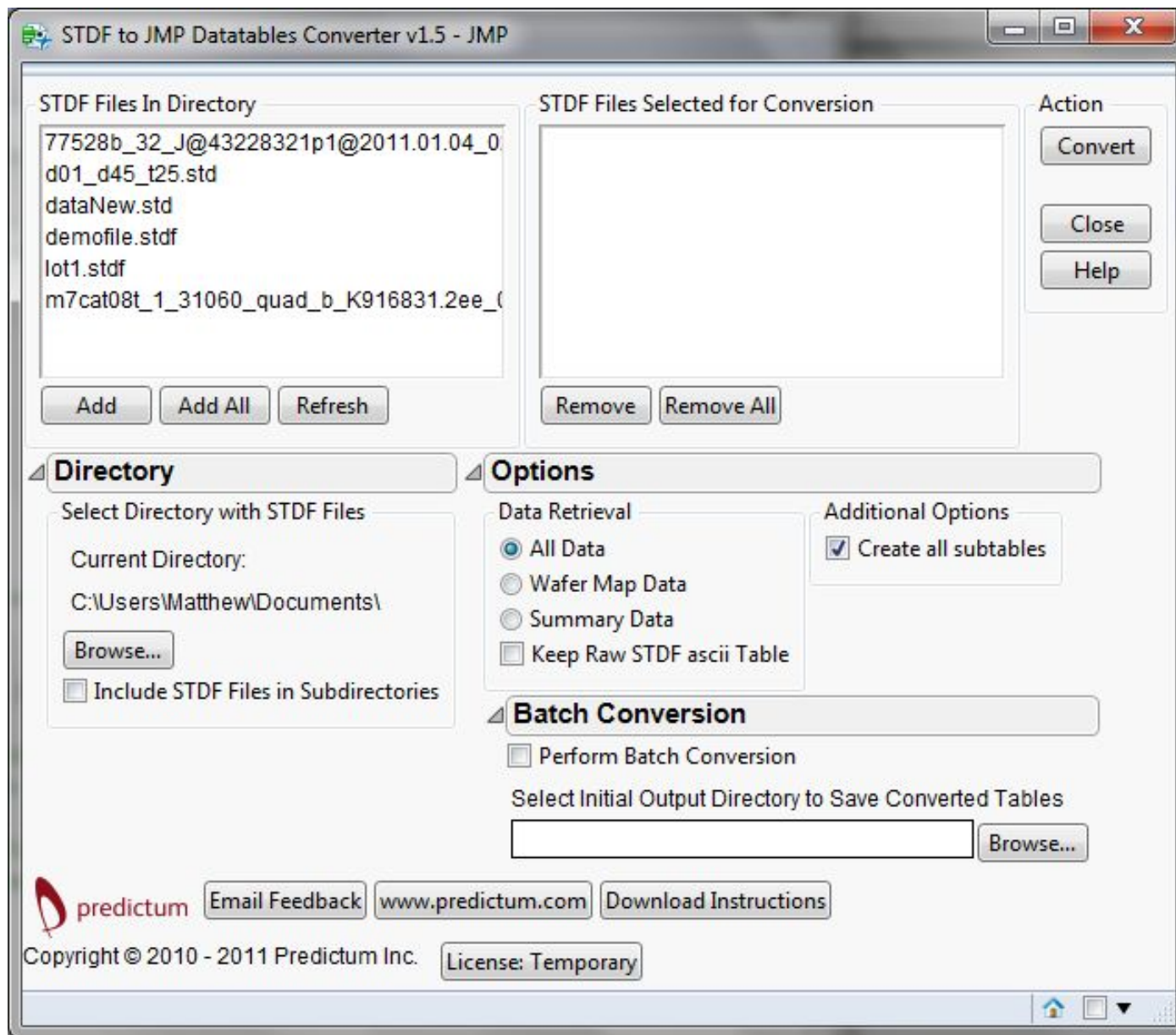


Begin by browsing to the directory where the STDF files are located.

List of STDF Files in Directory: select the files you wish to import and click Add, or click Add All to import all the files in the list.

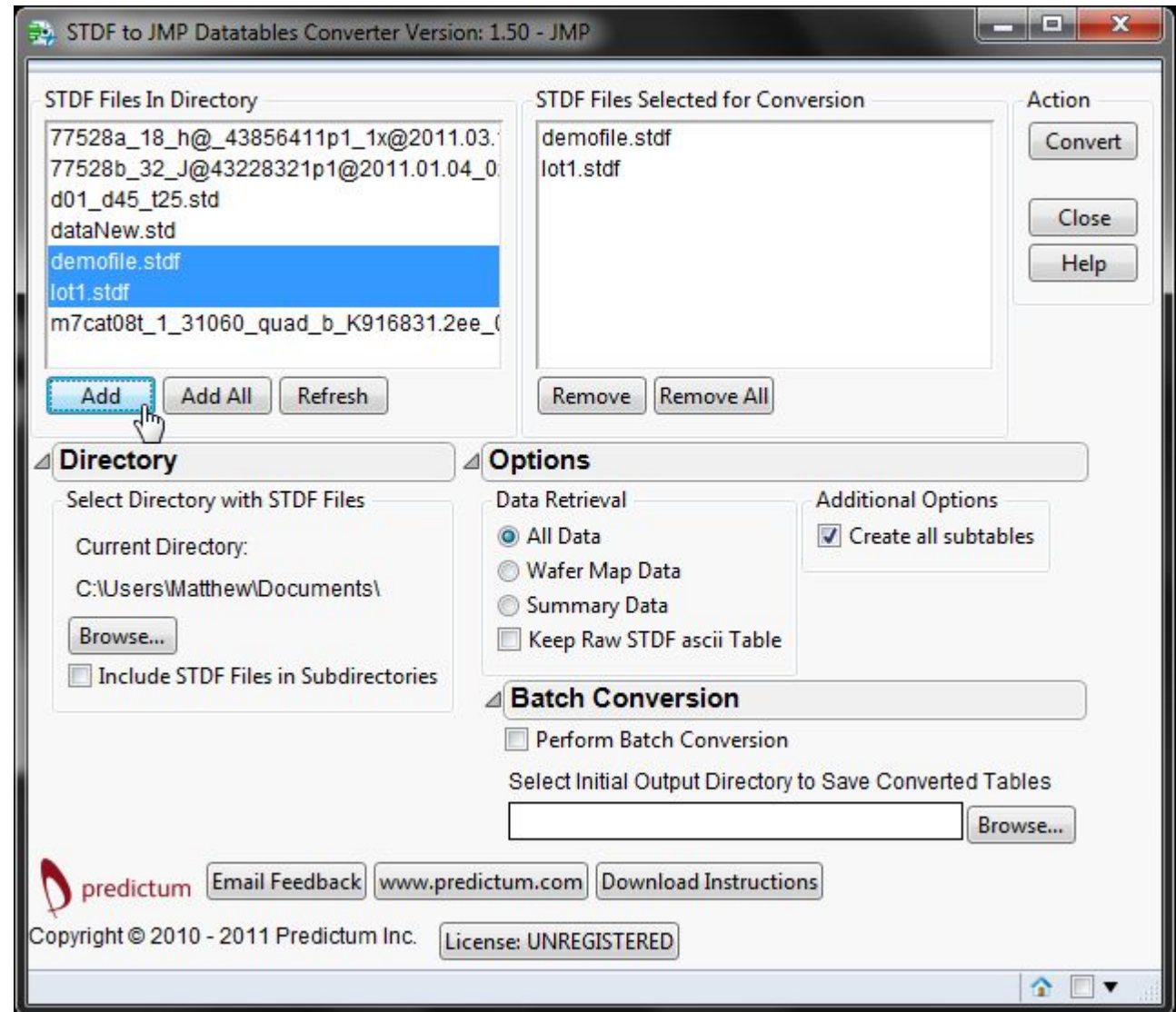
List of Files Selected for Conversion: The files in this list will be imported to JMP. Selected files can be removed, or the choice to remove all files.

Option to Perform Batch conversion by checking the box and choosing a directory to where the tables will be saved. This will automatically save and close the imported tables for you.



Select the files and then click Add

Choose which type of subtables to produce under options



Different data choices will yield more additional options

The last step: Each STDF file will create its own set of selected subtables

Click the Convert button to process the STDF files

The screenshot shows the 'STDF to JMP Datatables Converter Version: 1.50 - JMP' window. It is divided into several sections:

- STDF Files In Directory:** A list of files including '77528a\_18\_h@\_43856411p1\_1x@2011.03...', '77528b\_32\_J@43228321p1@2011.01.04\_0...', 'd01\_d45\_t25.std', 'dataNew.std', 'demofile.stdf' (highlighted in blue), 'lot1.stdf', and 'm7cat08t\_1\_31060\_quad\_b\_K916831.2ee\_...'. Below this list are 'Add', 'Add All', and 'Refresh' buttons.
- STDF Files Selected for Conversion:** A list containing 'demofile.stdf' and 'lot1.stdf'. Below this list are 'Remove' and 'Remove All' buttons.
- Action:** A vertical stack of buttons: 'Convert', 'Close', and 'Help'.
- Directory:** A section for selecting the directory. It shows 'Current Directory: C:\Users\Matthew\Documents\' and a 'Browse...' button. There is also a checkbox for 'Include STDF Files in Subdirectories'.
- Options:** A section with two sub-sections:
  - Data Retrieval:** Radio buttons for 'All Data', 'Wafer Map Data' (selected), and 'Summary Data'. A checkbox for 'Keep Raw STDF ascii Table' is also present.
  - Additional Options:** A list of checkboxes: 'Create Table for Parametric Data' (checked), 'Name Columns by Test Number' (selected), 'Name Columns by Test Name' (unchecked), 'Name Columns by Test Name & Number' (unchecked), 'Remove Rows with No Test Data' (checked), 'Show test flags for each Test' (unchecked), 'Always use Default Test Settings/Limits' (selected), 'Move Alternate Test Settings/Limits from Default' (unchecked), 'Copy Alternate Test Settings/Limits from Default' (unchecked), and 'Run Summary Statistics on Test Data' (checked).
- Batch Conversion:** A checkbox for 'Perform Batch Conversion' (unchecked). Below it is a text field for 'Select Initial Output Directory to Save Converted Tables' with a 'Browse...' button.

At the bottom of the window, there is a footer with the Predictum logo, 'Email Feedback', 'www.predictum.com', 'Download Instructions', 'Copyright © 2010 - 2011 Predictum Inc.', and 'License: UNREGISTERED'.



## Customization?

We're happy to enhance and integrate our Add-Ins to best suit your needs:

- connect directly to your sources of data
- enhanced reporting
- output your reports in PDF or PPT automatically

Check out all our JMP® Add-Ins at  
[www.predictum.com](http://www.predictum.com)

