



predictum

STDF Import Add-In
INSTALLATION GUIDE for JMP® 9

minimum requirements:
JMP® 9.0.1 (Add-In), Windows 32-bit/64-bit
Copyright © 2011 Predictum Inc.

Important Notice

These instructions are for the JMP® 9 version of this application. If you have other versions of JMP® installed, be sure that you are running this Add-In installation with JMP® 9 and not another version of JMP®.

As noted elsewhere in this document - this application works only with:

- JMP® 9.0.1, 32 bit/64 bit Windows

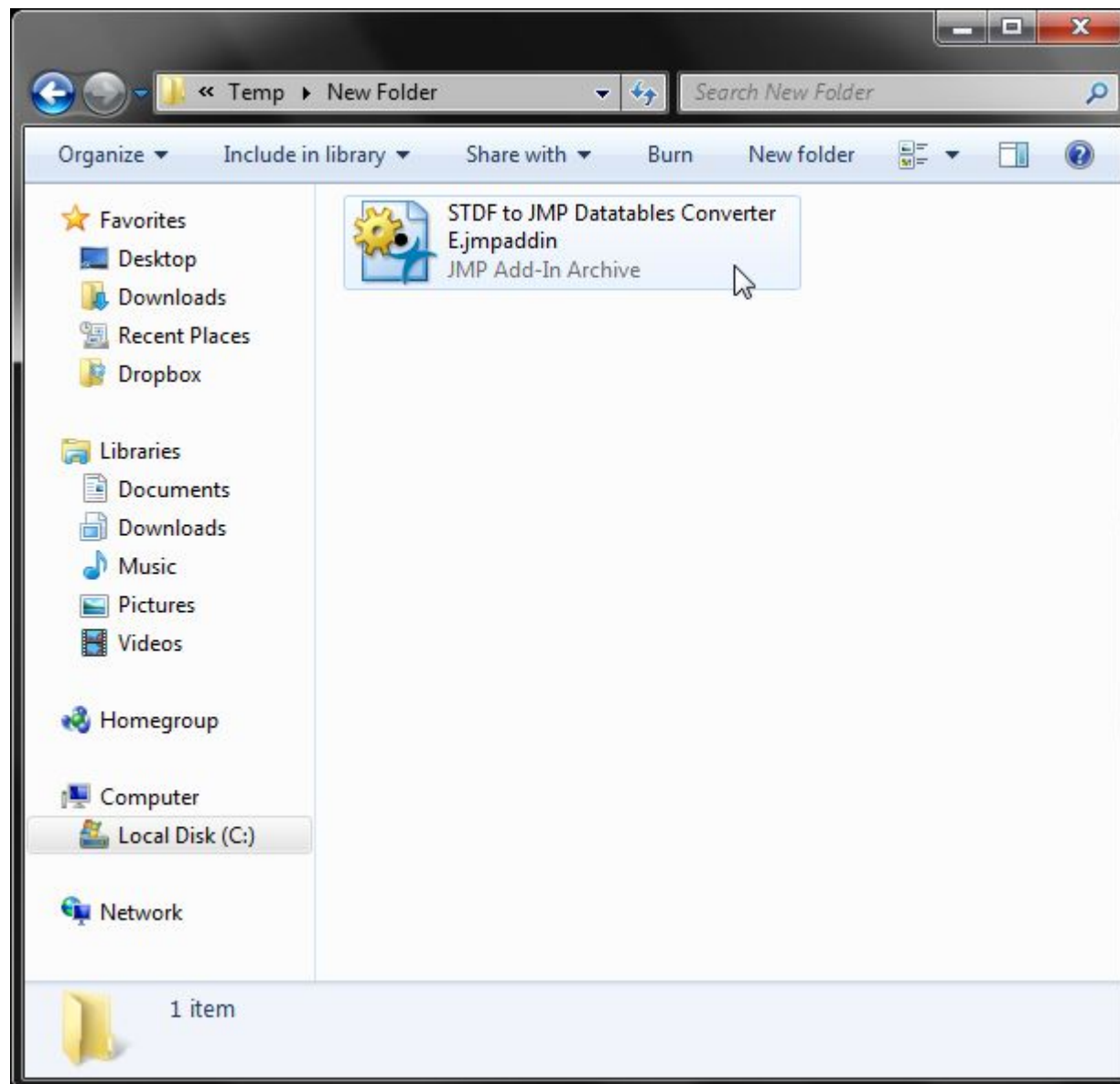


Introduction

The JMP 9 version comes in the form of a .jmpaddin file.

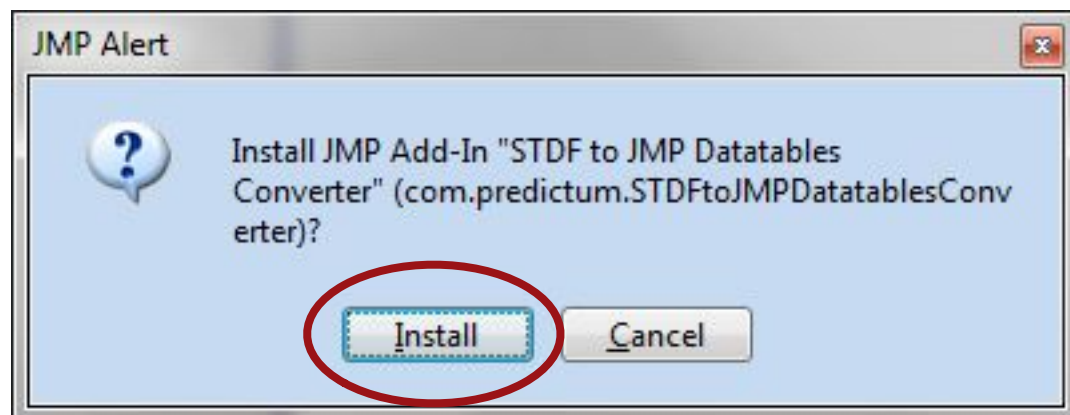
Installation

Download the jmpaddin file and double-click on it.



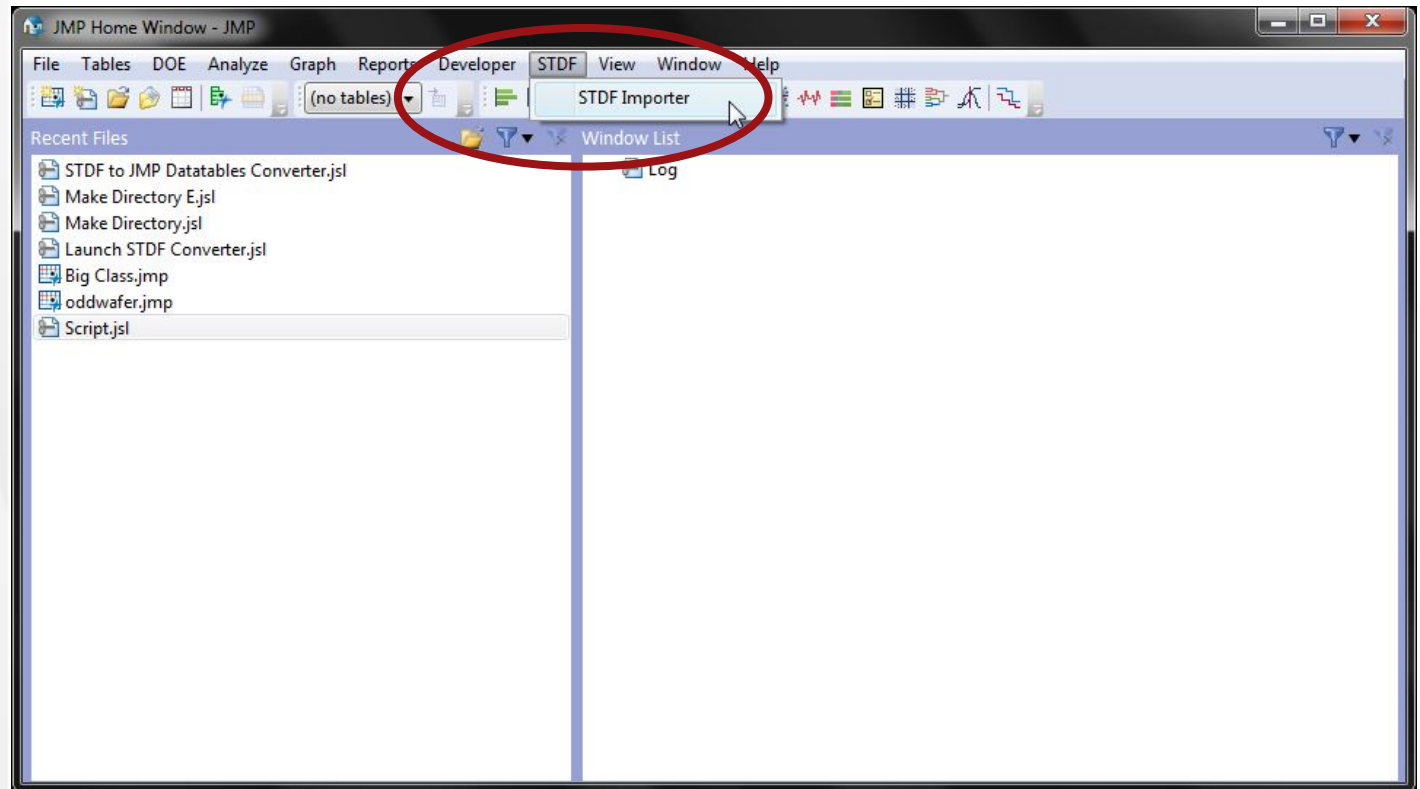
A window dialog will appear.

Click "Install" to install the Add-In in JMP



If it wasn't already there, a new menu item appears titled "STDF."

The STDF to JMP Datatables Converter Add-In can be found here.



Contact information

Questions, comments? Please send email to:
addins@predictum.com

Stay up to date with enhancements to this addin and be among the first to know about the release of new addins.

Join Predictum's announcement list by clicking [here](#).

Your information will not be shared with anyone and each notification comes with simple unsubscribe instructions.

