



predictum

Wafer Map  
INSTALLATION GUIDE for JMP® 9

---

minimum requirements:  
JMP® 9 (add-in)  
Copyright © 2011 Predictum Inc.

## Important Notice

---

These instructions are for the JMP® 9 Add-In version of this application. If you have other versions of JMP® installed, be sure that you are running this Add-In installation with JMP® 9 and not another version of JMP®.

As noted elsewhere in this document - this application works only with:

- JMP® 9.01



## Introduction

---

The JMP 9 version comes in the form of a .jmpaddin file.

## Installation

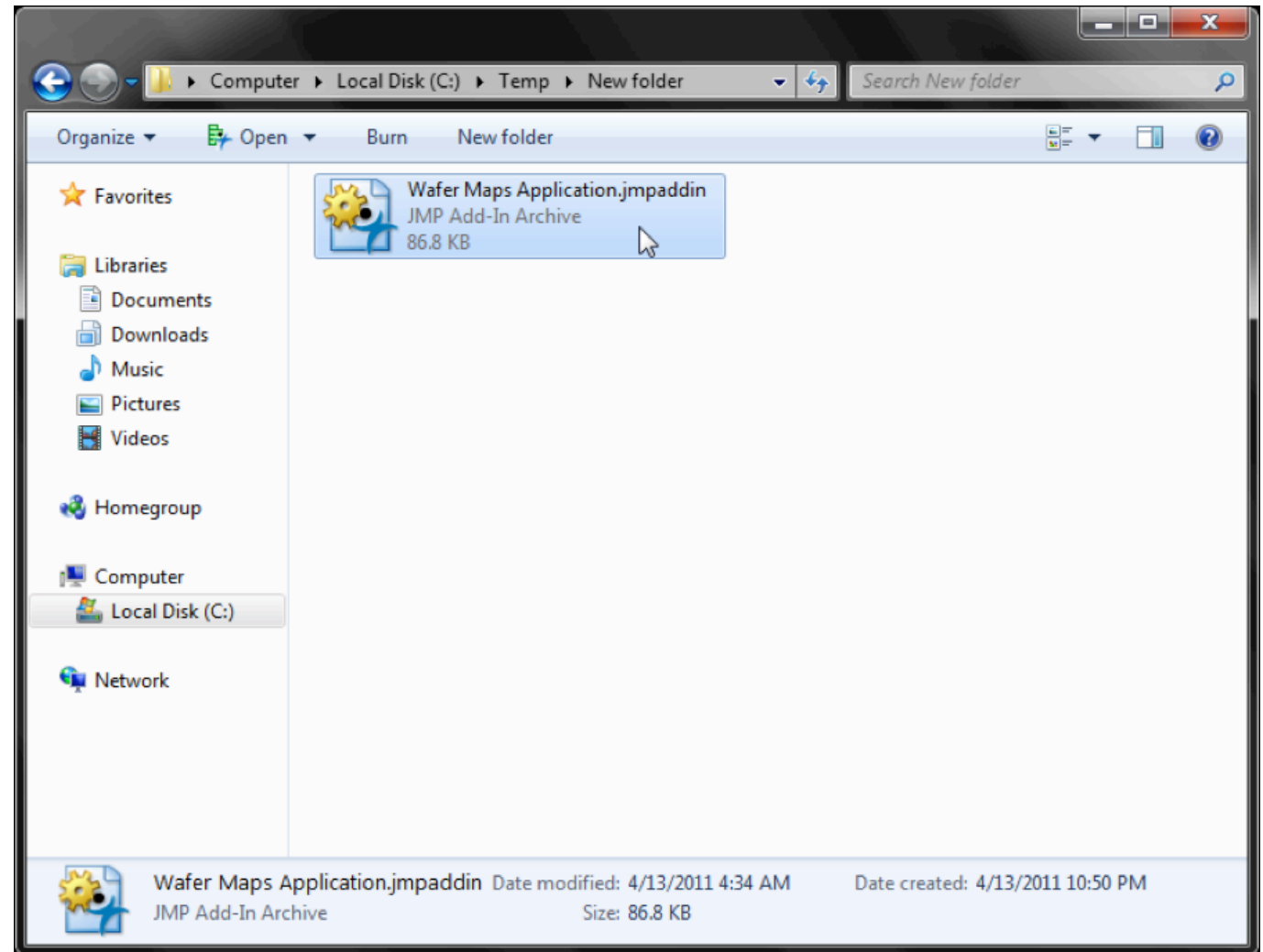
---

Download the jmpaddin file and double-click on it.

NOTE: some browsers consider .jmpaddin files to be zip files. There's good reason for this because .jmpaddin files ARE zip files. If your browser changes the suffix to .zip, simply change it back to .jmpaddin

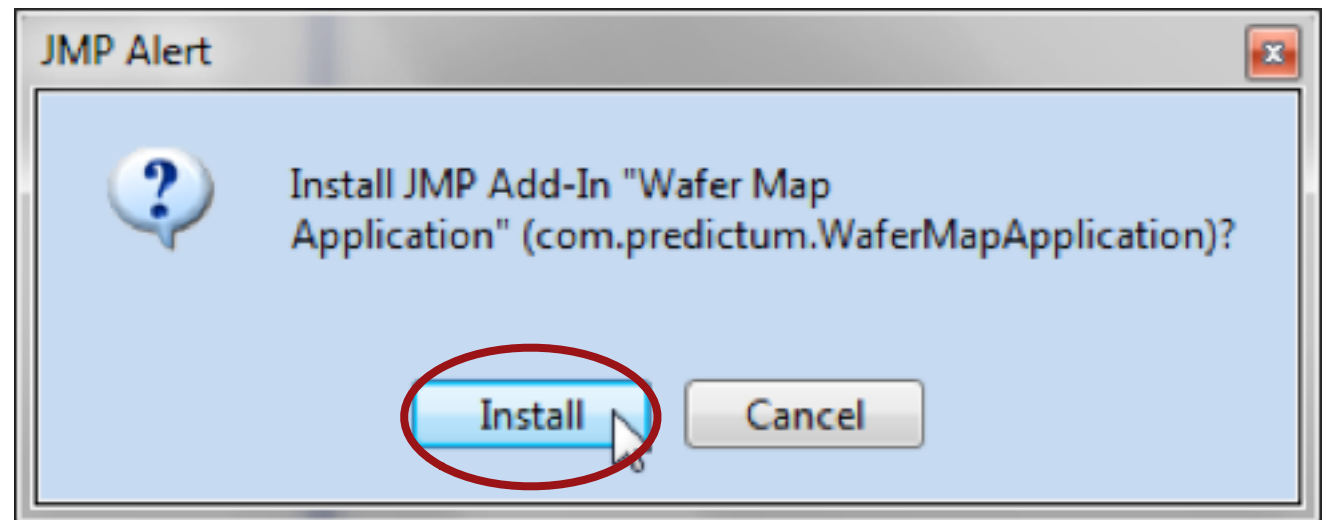


To install the addin, double click on the .jmpaddin file



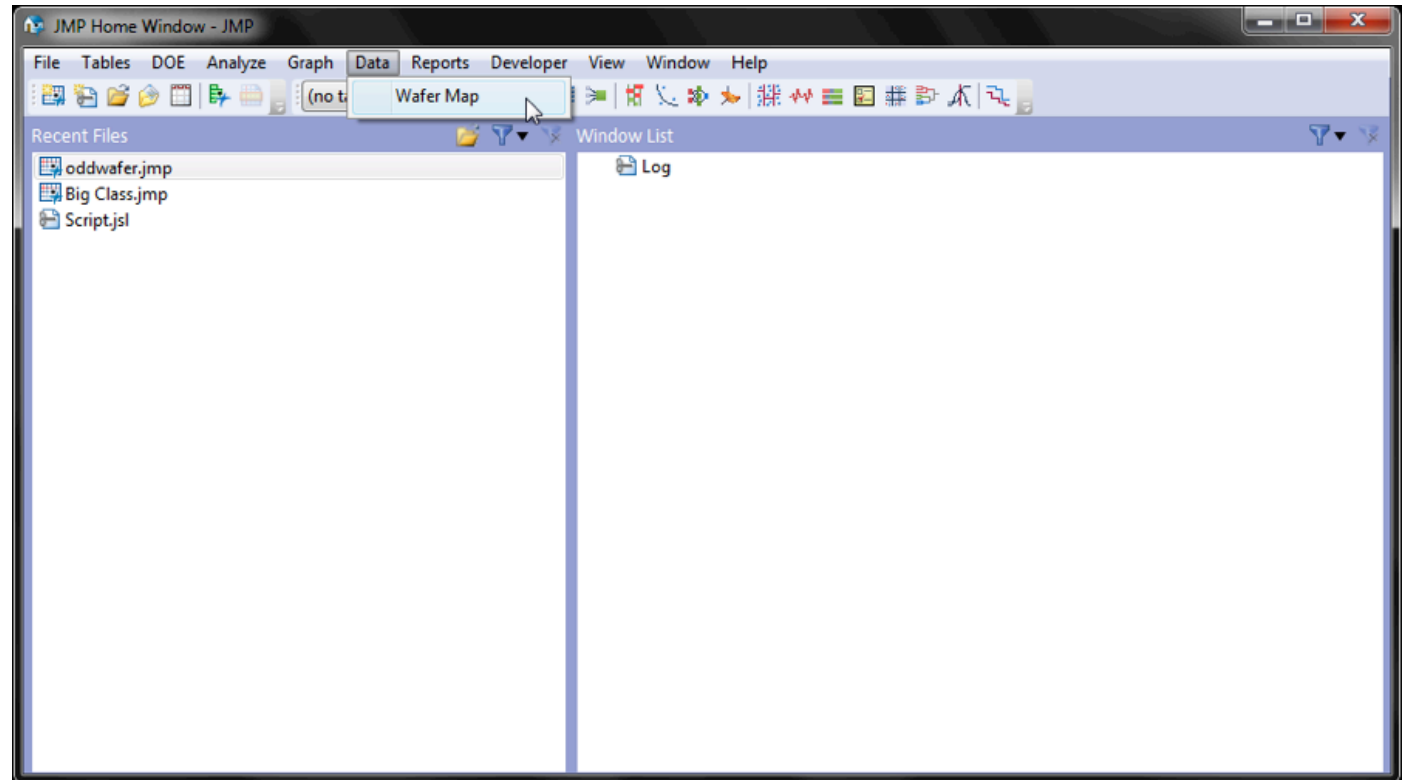
A window dialog will appear.

Click "Install" to install the Add-In in JMP®



If it wasn't already there, a new menu item appears titled "Data."

The Wafer Mapping Add-In can be found here.



Contact information

---

Questions, comments? Please send email to:  
[addins@predictum.com](mailto:addins@predictum.com)

Stay up to date with enhancements to this addin and be among the first to know about the release of new addins.

Join Predictum's announcement list by clicking [here](#).

Your information will not be shared with anyone and each notification comes with simple unsubscribe instructions.

